

Components

Energy, Measuring and DIY

Moving Coil Panel Meters

With mirror scale, all-plastic housing, quality class 2, zero point correction.
The meters are prewired for illumination.



Model	Order No.	Measuring range	Internal resistance	Dimensions display	Mounting cutout	Mounting depth
PM-2/30UA	29.0600	0.03 mA	6.5 kΩ	60.3 x 46.3 mm	Ø 37.5 mm	23 mm
PM-2/50UA	29.0660	0.05 mA	6.5 kΩ	60.3 x 46.3 mm	Ø 37.5 mm	23 mm
PM-2/+50UA	29.0450	± 0.05 mA	1.9 kΩ	60.3 x 46.3 mm	Ø 37.5 mm	23 mm
PM-2/100UA	29.0540	0.1 mA	1.0 kΩ	60.3 x 46.3 mm	Ø 37.5 mm	23 mm
PM-2/1mA	29.0480	1 mA	200 Ω	60.3 x 46.3 mm	Ø 37.5 mm	23 mm
PM-2/50mA	29.0650	50 mA	1.2 Ω	60.3 x 46.3 mm	Ø 37.5 mm	23 mm
PM-2/3A	29.0590	3 A	20 mΩ	60.3 x 46.3 mm	Ø 37.5 mm	23 mm
PM-2/5A	29.0640	5 A	12 mΩ	60.3 x 46.3 mm	Ø 37.5 mm	23 mm
PM-2/10A	29.0500	10 A	6 mΩ	60.3 x 46.3 mm	Ø 37.5 mm	23 mm
PM-2/15A	29.0560	15 A	4 mΩ	60.3 x 46.3 mm	Ø 37.5 mm	23 mm
PM-2/10V	29.0520	10 V	10 kΩ	60.3 x 46.3 mm	Ø 37.5 mm	23 mm
PM-2/15V	29.0570	15 V	15 kΩ	60.3 x 46.3 mm	Ø 37.5 mm	23 mm
PM-2/30V	29.0610	30 V	30 kΩ	60.3 x 46.3 mm	Ø 37.5 mm	23 mm

V-22

Order No. 29.1050

Panel meter, with VU lettering,
250 µA/750 Ω, ±10%.

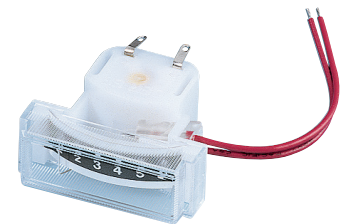


E-11A

Order No. 29.0190

Profile panel meter

- For tuning and level display
- Scale 1-6
- 120 µA/750 Ω
- Illuminated



TC-2510L

Order No. 03.1050

Fuse holder

- For American/Japanese fine-wire fuses (6.3 x 32 mm)
- Ø 15 mm
- Insertion length: 42 mm
- = 10 A/ > 50 V



GE-860

Order No. 07.0090

BNC plug/banana jack

- Distance: 19 mm
- Counterpart to GE-866
- Useful measuring adapter, e.g. in combination with an oscillograph

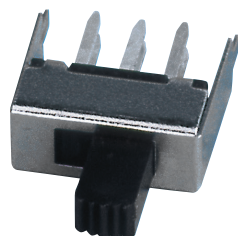


T-561

Order No. 34.2700

Miniature sliding switch

- 2 x ON/ON
- PCB mounting
- Pin spacing: 3.96 mm
- Contacts flux-sealed
- For safety extra-low voltage or signal voltage



T-217

Order No. 01.1630

Miniature sliding switch

- 2 x ON/ON
- Current rating: 0.3 A
- For safety extra-low voltage or signal voltage

